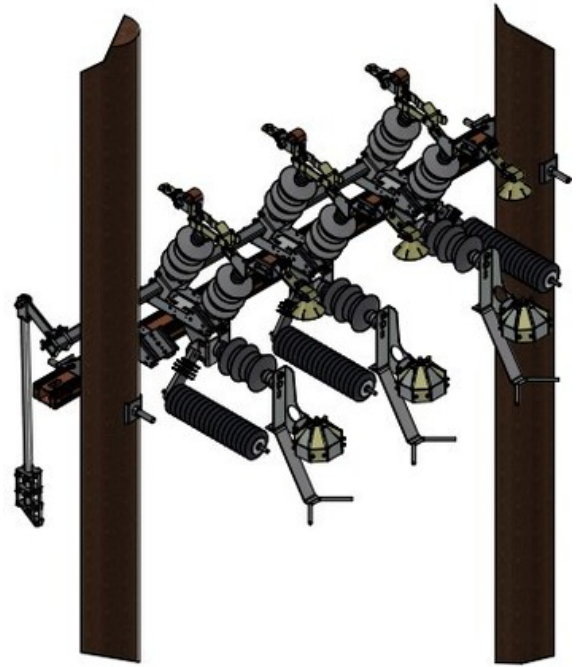


Product name	Fuse switch disconnecter
Product code	2862208
Product type	10438
GTIN	7070701322728
ETIM-Class	EC003509



Measurements

Length	2 370 mm
Height	1 045 mm
Width	1 245 mm
Weight	142 000 g

Line Switchers

Rated Voltage	24 kV
impulsspänning_fase_Jord	125 kV
impulsspänning_over_åpen_pol	145 kV
holdespenning_50hz_fase_jord	60 kV
merkestrøm	630 A
Thermal Current 3 sec	25 kA
støtstrøm	62,5 kA
Bryterevne_med_kontaktsvøpe_24kv	25 A
bryterevne_med_lasthode_24kv	630 A
innkoblingsevne_med_hovedkontakt	10 kA
Standard	SS 428 12 00, IEC 60129, IEC 60265

Line Switcher Configuration

avleder_type	PDV100
--------------	--------

ur	30 kV
fraskiller	Yes
surge_arrester_placement	Parallell
mastarrangement	
	2 m
	0,5 m
	GKG43
	Yes
	No
	No
	GHF