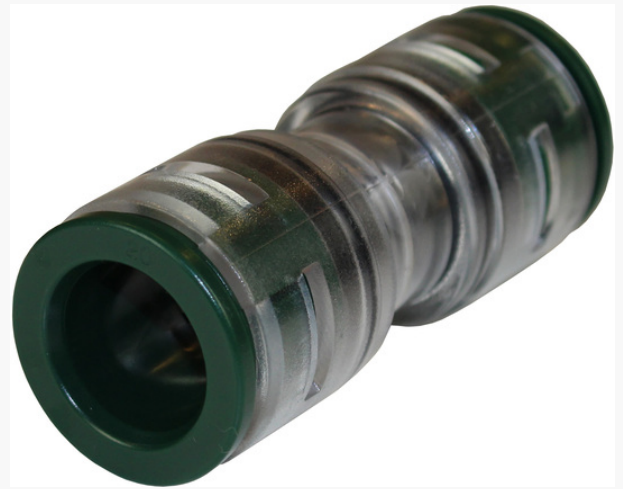


Product name	Straight connector DI 20/16mm, GREEN
Product code	2821562
Product type	DI
GTIN	7070701365749
ETIM-Class	EC001475



PRODUCT SPECIFICATIONS

A range of high-performance connectors dedicated to direct install systems for FTTx networks (micro duct systems) to guarantee easy use and long service time. Reliable technology of push-in connection. Compact design and intuitive installation. Straight connectors are used for splicing microducts with the same dimensions.

Measurements

Length	82,5 mm
Height	33,5 mm
Width	33,5 mm
Weight	39,75 g

Technical Specifications - Duct Connectors

Type	Straight - Direct Installed
For Duct Size	20/16mm
Max Pressure	16 Bar
Colour	Green
IP Codes	IP68
Temperature ranges for Operation	-10°C - +60°C