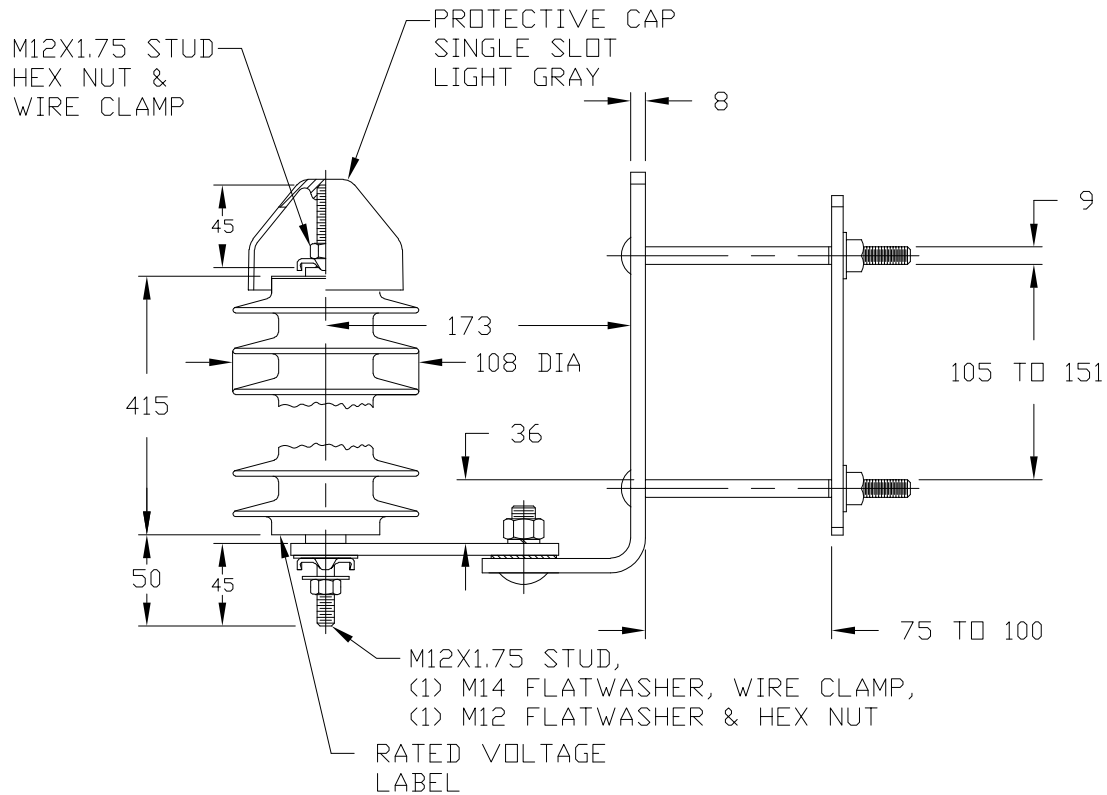


NOTES:

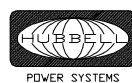
1. DIMENSIONS SUBJECT TO +/- 5% TOLERANCE
2. LEAKAGE DISTANCE - 1173 MM
3. ALTITUDE 0-3600 METERS ABOVE SEA LEVEL
4. WEIGHT OF UNIT INCLUDING HARDWARE - 7.1 KG
5. MAXIMUM CONTINUOUS LINE-TO-GROUND OPERATING VOLTAGE U_c 24.4 kV
6. RATED VOLTAGE U_c 30 kV RMS



10kA STEEP CURRENT U_{res} kV	500 A SWITCHING SURGE U_{res} kV	MAXIMUM 8/20 RESIDUAL VOLTAGE - kV AT					
		1.5 kA	3.0 kA	5 kA	10 kA	20 kA	40 kA
93.4	65.3	70.3	73.8	77.3	80.7	90.6	101.8

10 kA
ARRESTER
IEC 6099-4 Ed2.2
CLASS 2
IEC 6099-4 Ed3.0
CLASS STATION LOW

CONFIDENTIAL: THIS DRAWING AND ITS
CONTENTS ARE CONFIDENTIAL AND THE
EXCLUSIVE PROPERTY OF HUBBELL
POWER SYSTEMS. NO PUBLICATION,
DISTRIBUTION OR COPIES MAY BE MADE
WITHOUT THE WRITTEN CONSENT OF
HUBBELL POWER SYSTEMS.
HUBBELL POWER SYSTEMS UNPUBLISHED
ALL RIGHTS RESERVED UNDER THE
COPYRIGHT LAWS.



HUBBELL® POWER SYSTEMS

TITLE

ARRESTER METRIC
24.4 kV U_c

SIZE	DWG NO.	CAT / PART / ASSY NO.	REV
S	--	214524-CCCI	0

REV DATE 12/09/20

DO NOT SCALE THIS DRAWING	DRN BY RVK	DATE 12/09/20	SHEET 1 OF 1
------------------------------	------------	---------------	--------------