

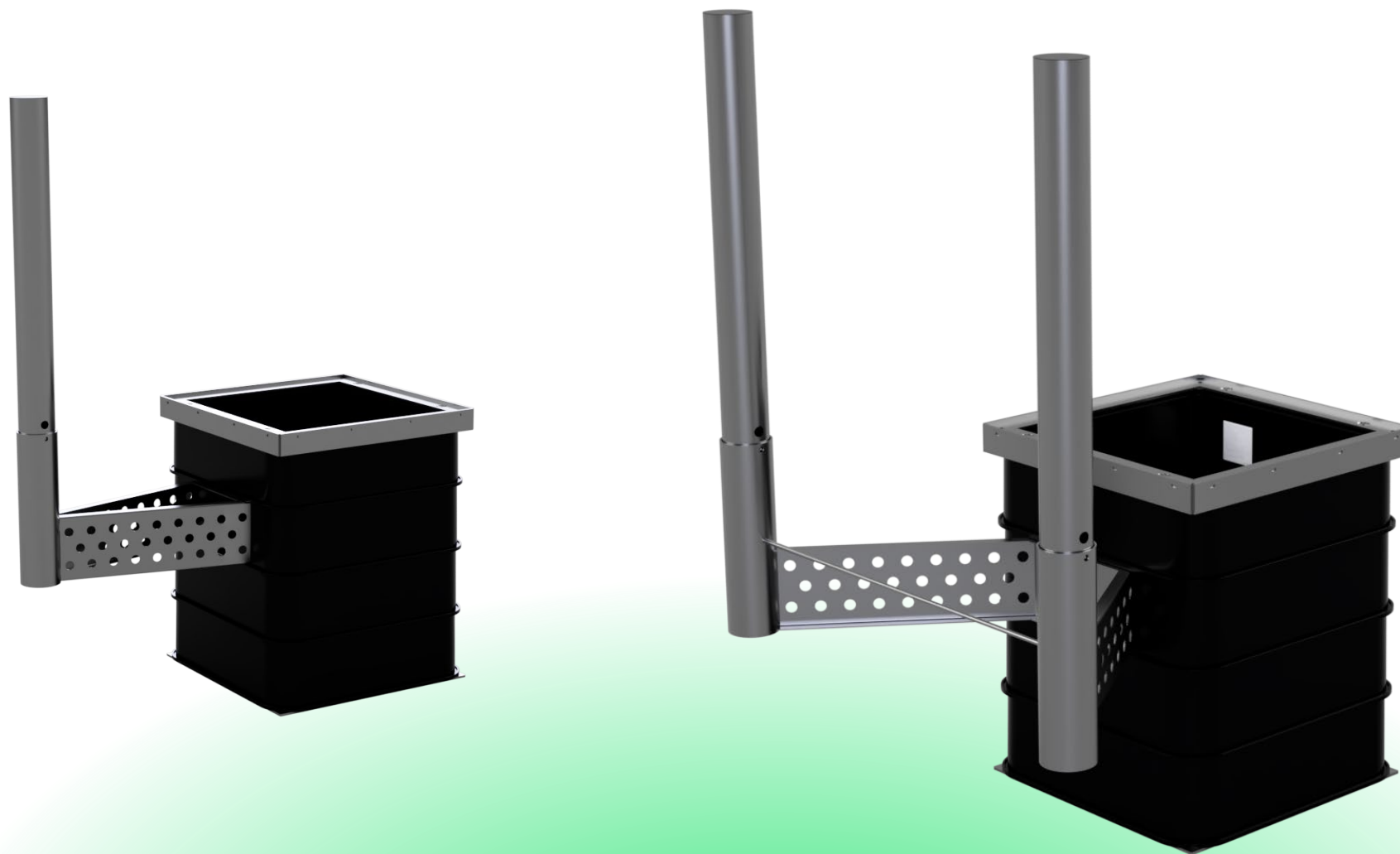
M E L
B Y
E

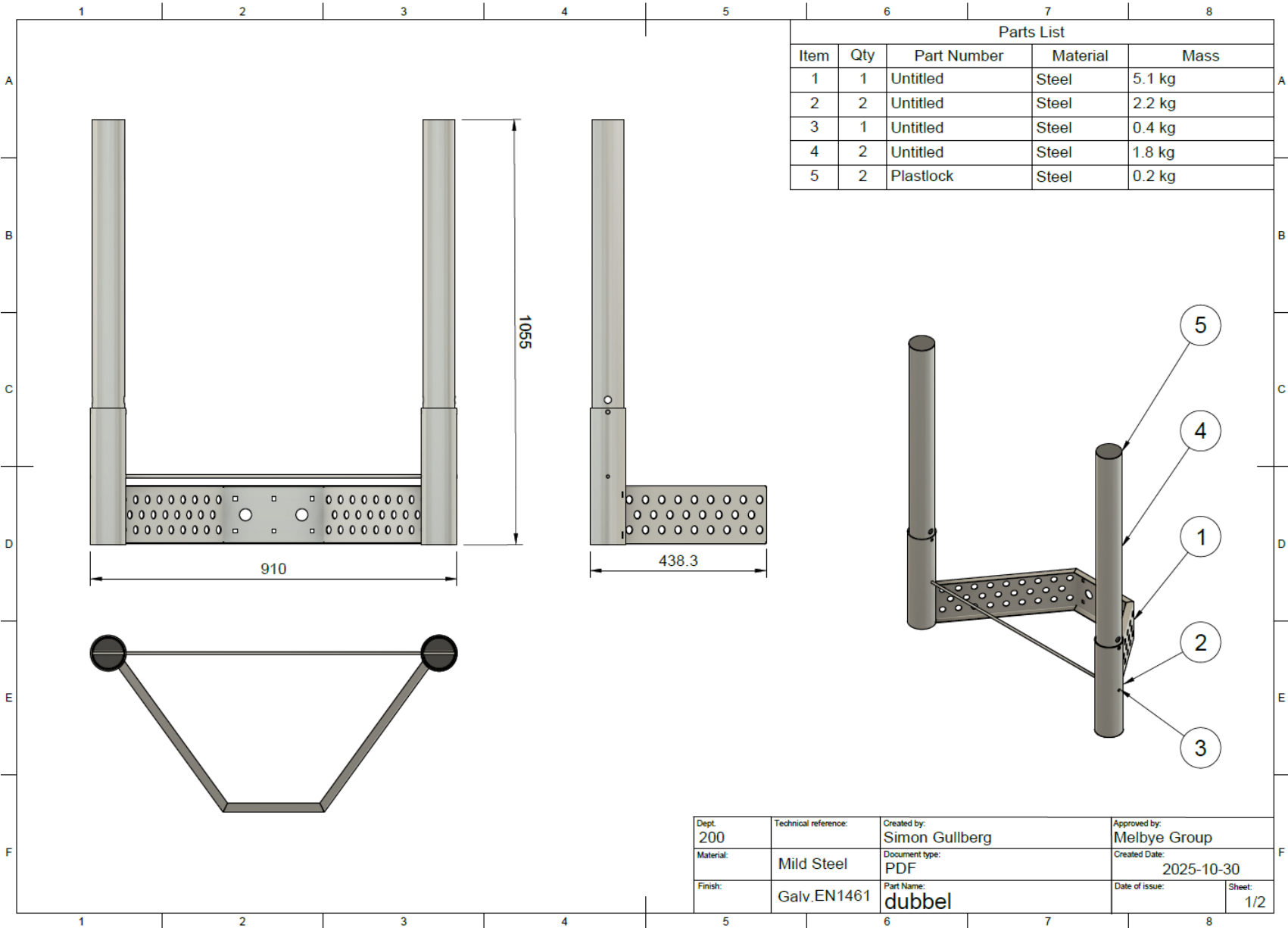
Simon Gullberg
Product and solution Manager

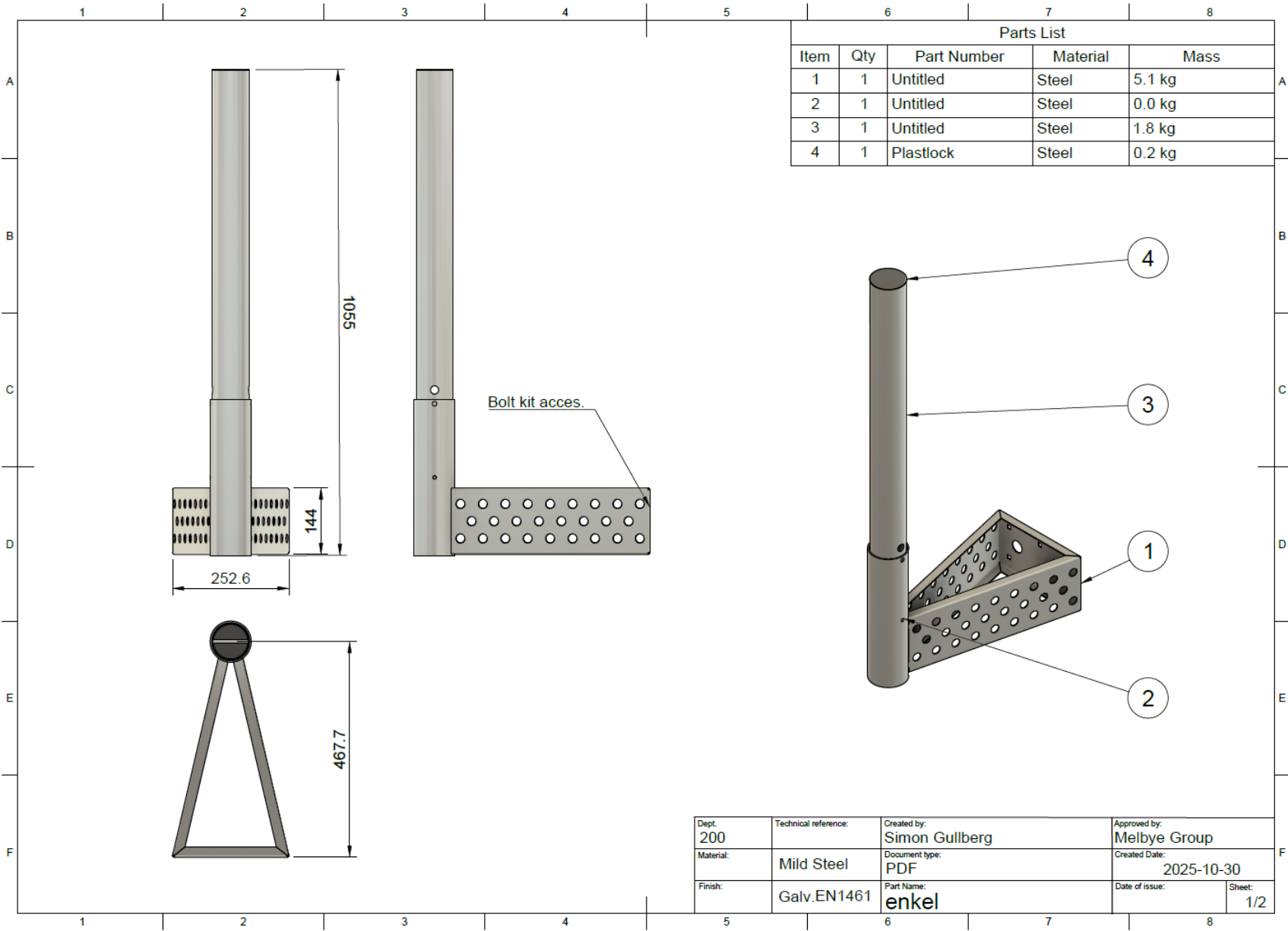


November 2025 Installation Manual

Collision Protection Double and Singel



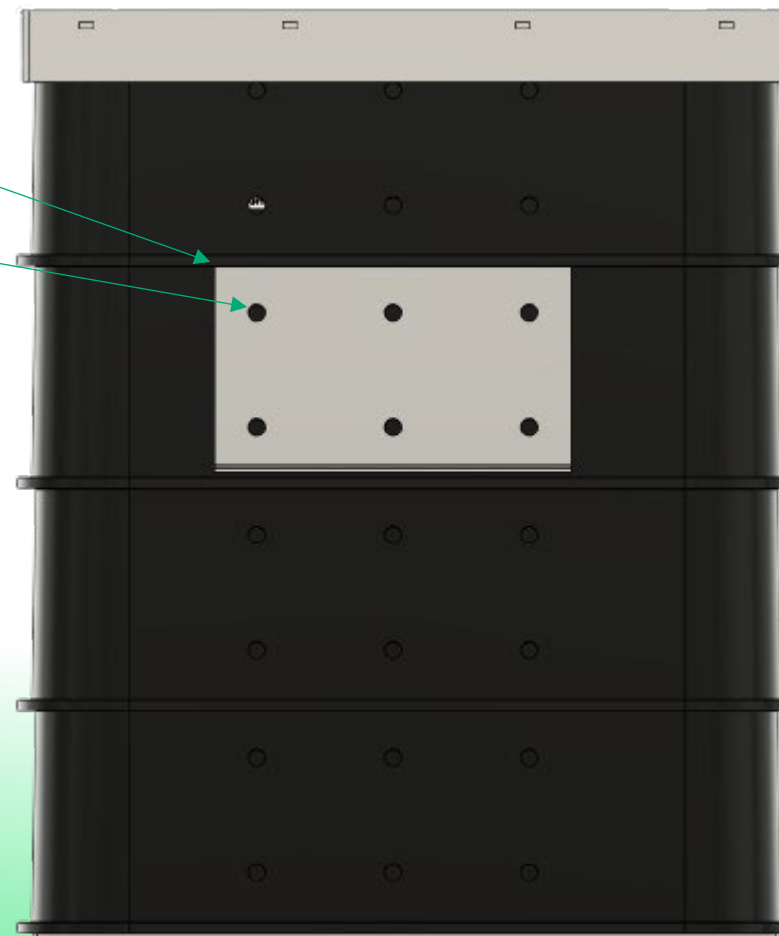




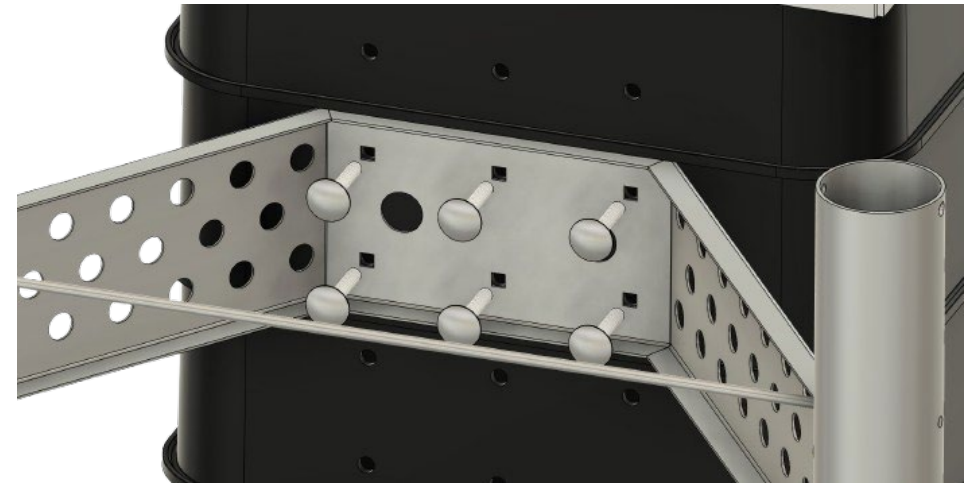
- Included: 6pcs Carriage Bolts with Flange nut
- On site tools: 10mm drill bit
- On site tools: 15mm socket
- On site tools: Drilling machine



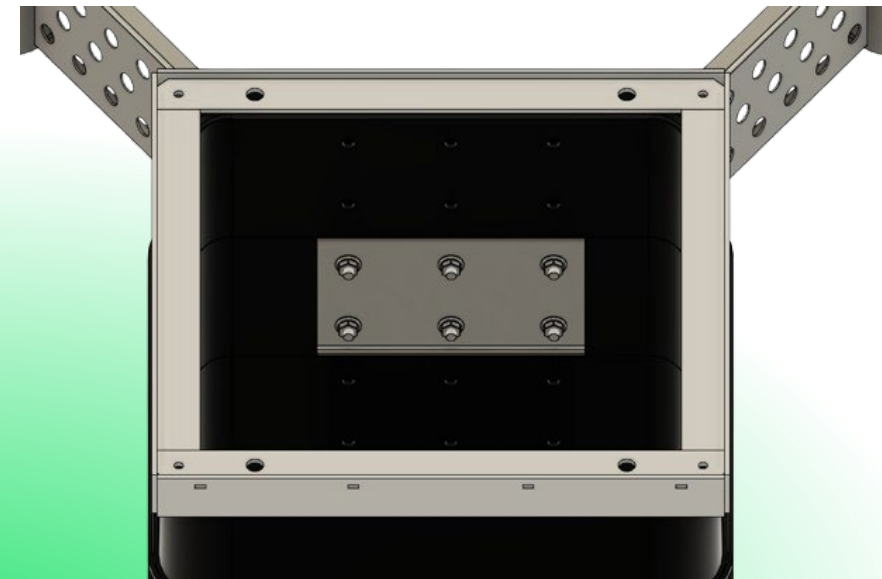
- Step 1: Place drilling templet on 2nd section from top
- Step 2: Use 10mm drill and make 6 holes for bolts



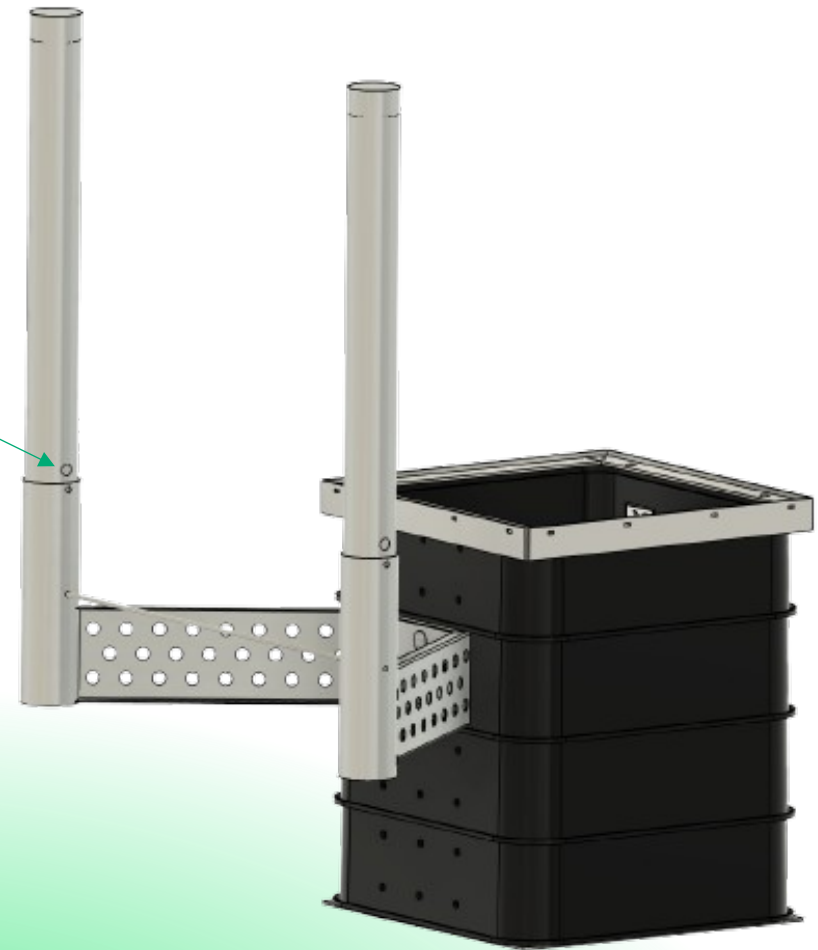
- Step 3: Place base frame on foundation
- Step 4: Insert carriage bolts, use hammer to lock them into position.



- Step 5: Place drilling templet over bolts
- Step 6: Attach 6 flange nuts and tighten with 10Nm



- Step 7: Place collision poles in holes
- Step 8: Tighten poles by inserting steel rod in holes and turn.



Thank you for your attention